



# eAssessment REPORTS





# Table of Contents

Student Test-Taking Environment .....	3
District Performance .....	4
District Test Score Comparison .....	5
School Performance .....	6
School Test Score Comparison .....	7
Class Standards Performance.....	8
Class Standards Performance Over Time .....	9
Class Grouping Report.....	10
Class Single-Test Analysis by Standard.....	11
Class Single-Test Analysis by Question .....	12
Class Standards Comparison .....	13
Class Test Score Overview .....	14
Class Test Score Comparison .....	15
Class DOK Performance by Standard Strand .....	16
Student Standards Performance Over Time .....	17
Student Standards Performance Comparison .....	18
Student Test Scores Comparison.....	19
Student Test Scores Overview.....	20

# Student Test-Taking Environment

Prepare students for the format and environment of state assessments.

- Mirrors high-stakes assessment environment
- Includes technology-enhanced item types such as drag-and-drop, multi-part, and multi-select
- Aligns with ELA Standards
- Weekly, Unit, and Interim Assessments available at every grade, K–5

Meets  
WCAG 2.0  
Accessibility  
Standards



# District Performance

Quickly identify strengths and opportunity gaps for the district based on ELA standards.

**Great for:**

- ✓ Identifying opportunity gaps
- ✓ Informing instructional focus for district
- ✓ Reviewing school performance

Reports on the ELA standards.

Grouped by strands with percentages shown for each.

See standards grouped by achievement level.

Select a standard or strand to see additional information.

See individual student performance on each standard or strand.

**Standards Performance**

View: English Language Arts | Test(s) assessed for: Grade 1 | Assessed with: 1+ questions

Strand	Language	Reading: Foundational Skills	Reading: Informational Text	Reading: Literature	Speaking & Listening	Writing
Avg.	75%	87%	57%	67%	87%	27%
80%	L.1.1b		RI.1.2	RL.1.6		W.1.1 W.1.2 W.1.6
60-79%	L.1.6 L.1.1e L.1.2e	RF.1.4c	RI.1.5 RI.1.6 RI.1.7			W.1.5
40-59%	L.1.1 L.1.1i L.1.1j L.1.5	RF.1.4b RF.1.3b RF.1.3c	RI.1.8 RI.1.9 RI.1.10 RI.1.3 RI.1.4	RL.1.1 RL.1.7 RL.1.9		W.1.3 W.1.7
10%	L.1.1a L.1.2a	RF.1.1 RF.1.1a		RL.1.2 RL.1.3	SL.1.2 SL.1.3	

**Performance Over Time**

**Reading: Literature**

RL.1.6: Identify who is telling the story at various points in a text.

Average Score: 84% based on 20 questions

Score	< 40%	40-59%	60-79%	≥ 80%
All	10	8	9	3

School (5/7)	Number of Questions	% Students Complete	Score
Allen Elemen...	20	83	90
Butler Eleme...	20	76	85
Eastlake Aca...	20	75	78
Manroe Eleme...	20	67	60

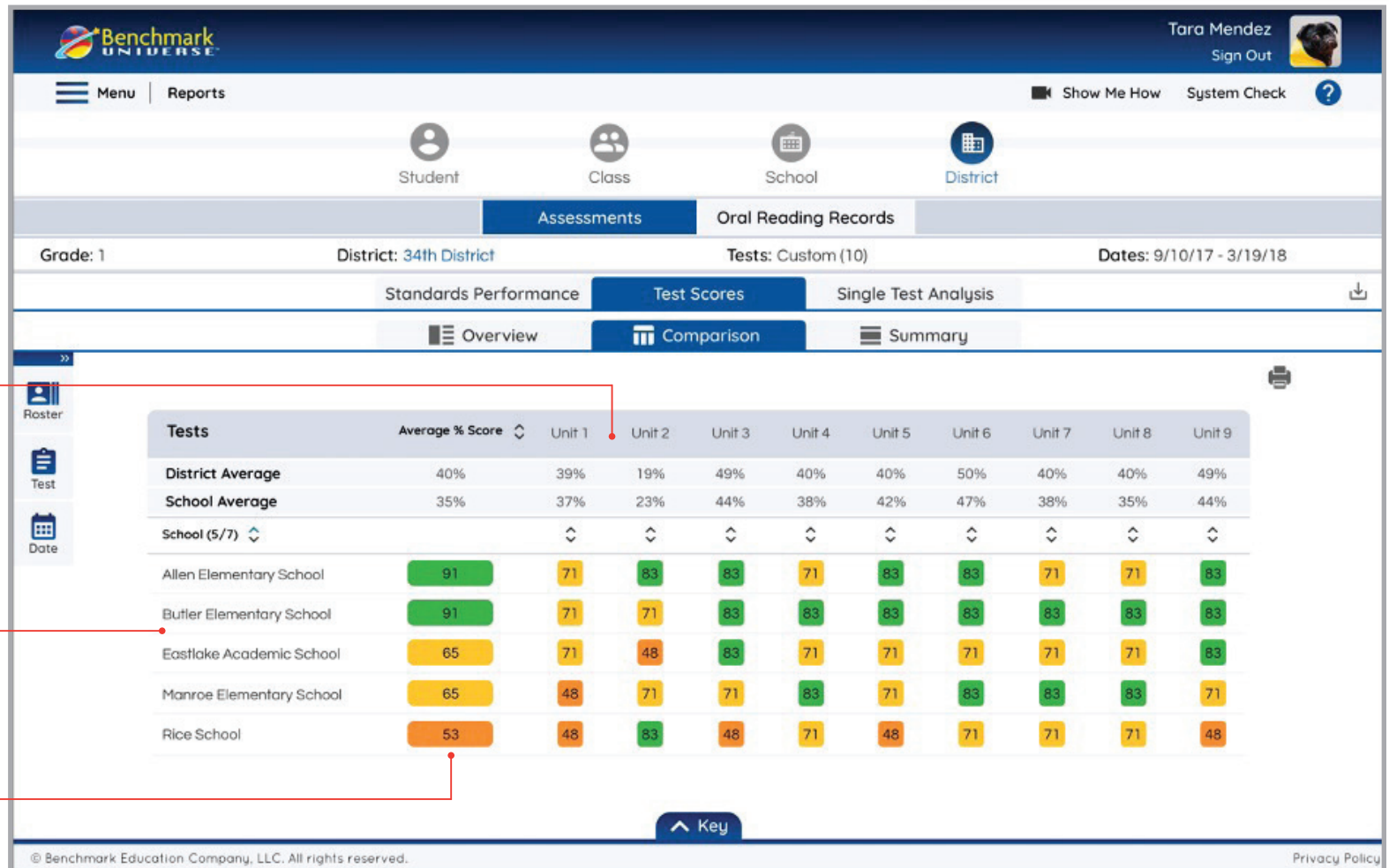
© Benchmark Education Company, LLC. All rights reserved. Privacy Policy

# District Test Score Comparison

Provides an overview of assessment performance over time for the district, with the ability to see results for each school.

## Great for:

- ✓ Tracking performance over time
- ✓ Viewing school assessment results
- ✓ Identifying schools in need of additional support



Assessment results are presented for multiple assessments.

See results over time for each school in the district.

In addition to showing results per each assessment, results for each school are also averaged.

# School Performance

Quickly identify strengths and opportunity gaps for classes based on ELA standards.

## Great for:

- ✓ Identifying opportunity gaps
- ✓ Informing instructional focus for school
- ✓ Reviewing class performance

Reports on the ELA Standards.

Grouped by strands with percentages shown for each.

See standards grouped by achievement level.

Select a standard or strand to see additional information.

See individual classroom performance on each standard or strand.

**Reports on the ELA Standards.** (Points to the 'Standards Performance' tab)

**Grouped by strands with percentages shown for each.** (Points to the strand headers: Language, Reading: Foundational Skills, Reading: Informational Text, Reading: Literature, Speaking, Writing)

**See standards grouped by achievement level.** (Points to the 'Achievement Level' column)

**Select a standard or strand to see additional information.** (Points to the 'RL.1.3' standard)

**See individual classroom performance on each standard or strand.** (Points to the 'Class List' table)

Strand	Avg. %
Language	Avg. 75%
Reading: Foundational Skills	Avg. 87%
Reading: Informational Text	Avg. 57%
Reading: Literature	Avg. 67%
Speaking	Avg. 87%
Writing	Avg. 27%

Achievement Level	Language	Reading: Foundational Skills	Reading: Informational Text	Reading: Literature	Speaking	Writing
≥ 80%	L.1.1b		RI.1.2	RL.1.7		W.1.1 W.1.2 W.1.6
60-79%	L.1.6 L.1.1e L.1.2e	RF.1.4c	RI.1.5 RI.1.6 RI.1.7			W.1.5
40-59%	L.1.1 L.1.1 L.1.1j L.1.5	RF.1.4b RF.1.3b RF.1.3c	RI.1.8 RI.1.9 RI.1.10 RI.1.3 RI.1.4	RL.1.1 RL.1.3 RL.1.9		W.1.3 W.1.7
0%	L.1.1a L.1.2a	RF.1.1 RF.1.3a		RL.1.2 RI.1.4	SL.1.2 SL.1.3	

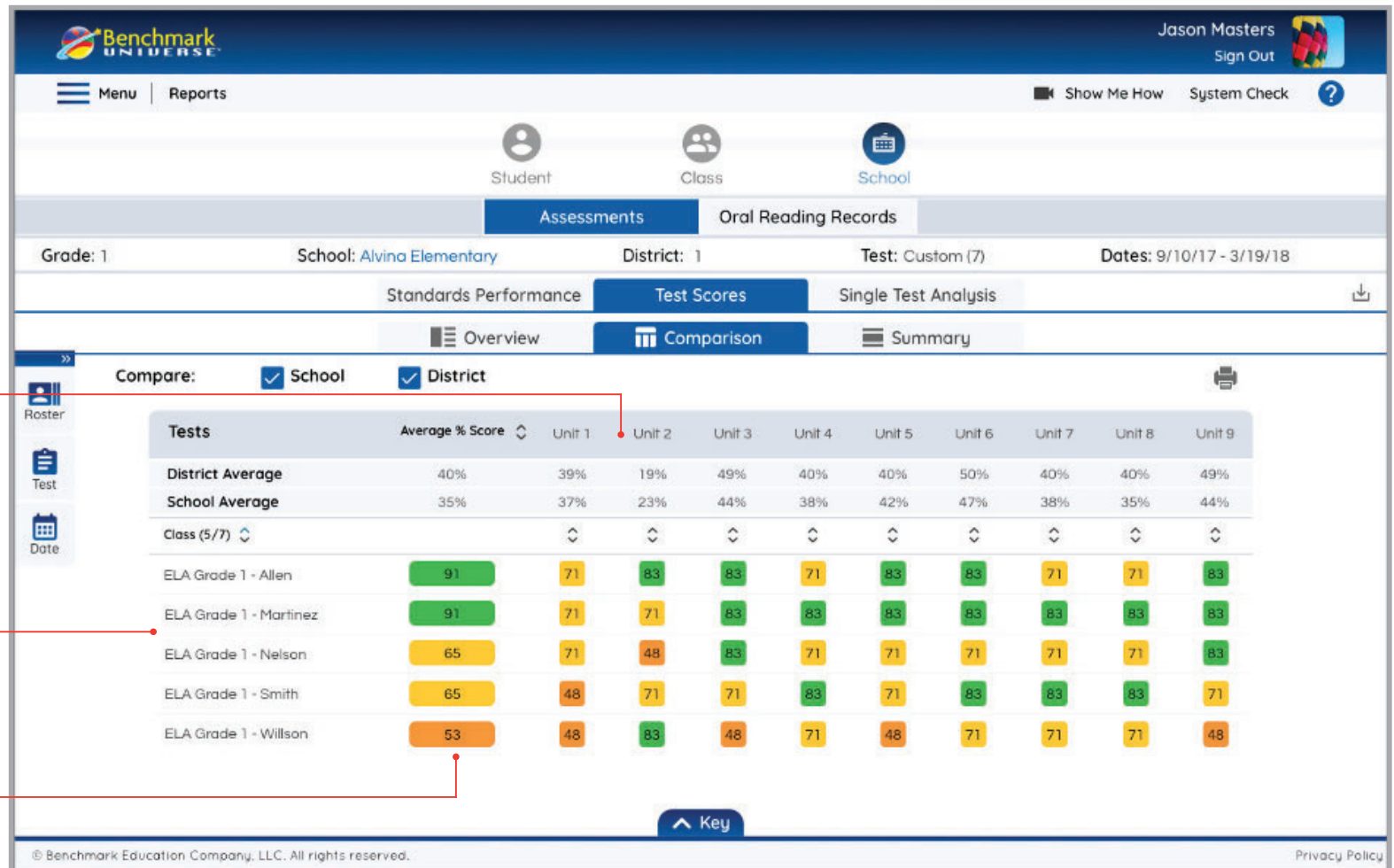
Class (5/7)	No. of Qns	%Students Complete	Score
ELA Grade 1 - Allen	20	89	85
ELA Grade 1 - Martinez	20	97	81
ELA Grade 1 - Nelson	20	84	80
ELA Grade 1 - Smith	20	70	78

# School Test Score Comparison

Provides a quick overview of assessment performance for the school over time that allows you to see results for each class.

## Great for:

- ✓ Tracking performance over time
- ✓ Viewing class assessment results
- ✓ Identifying classes in need of additional support



Assessment results are presented for multiple assessments.

See results over time for each class in the school.

In addition to showing results per each assessment, results for each class are also averaged.

# Class Standards Performance

Quickly identify strengths and opportunity gaps for the class based on ELA standards.

Great for:

- ✓ Identifying opportunity gaps
- ✓ Informing grouping decisions
- ✓ Informing instructional next steps

Reports on the ELA Standards.

Grouped by strands with percentages shown for each.

See standards grouped by achievement level.

Select a standard or strand to see additional information.

See individual student performance on each standard or strand.

Class: English Language Arts 146 Teacher: Tina Smith Grade: 1 School: Alvina Elementary Test: Custom (10) Dates: 9/10/17 - 3/19/18

Standards Performance Test Scores Single Test Analysis

Overview Comparison Grouping Summary

View: English Language Arts Test(s) assessed for: Grade 1 Assessed with: 1+ questions

Strand	Avg. %	Standards
Language	Avg. 75%	L.1.1b, L.1.6, L.1.1e, L.1.2e, L.1.1, L.1.1, L.1.1j, L.1.5, L.1.1a, L.1.2a, L.1.1c
Reading: Foundational Skills	Avg. 87%	RF.1.4c, RF.1.4b, RF.1.3b, RF.1.3c, RF.1.1, RF.1.1a, RF.1.2
Reading: Informational Text	Avg. 57%	RI.1.2, RI.1.5, RI.1.6, RI.1.7, RI.1.8, RI.1.9, RI.1.10, RI.1.3, RI.1.4
Reading: Literature	Avg. 67%	RL.1.1, RL.1.3, RL.1.9, RL.1.2, RL.1.4, RL.1.6
Speaking	Avg. 87%	SL.1.2, SL.1.3, SL.1.4
Writing	Avg. 27%	W.1.1, W.1.2, W.1.6, W.1.5, W.1.3, W.1.7

Performance Over Time Student List

Reading Literature

RL.1.3: Describe characters in a story (e.g., their traits, motivations or feelings) and explain how their actions contribute to...

Average Score: 43% based on 20 questions

Score Range	Count
30	10
< 40%	8
40-59%	9
60-79%	3
≥ 80%	0

Students (30)	Number of Questions	Score
Thomas Avenell	10	85
Hallie Barns	10	81
Oliver Hewett	10	80
Hayden Lopez	10	78

© Benchmark Education Company, LLC. All rights reserved. Privacy Policy



# Class Standards Performance Over Time

Identify ELA standards performance trends for the class over time.

Great for:

- ✓ Identifying recurring opportunity gaps
- ✓ Informing instructional next steps

Adjust date range to see standards performance over time.

See achievement level by standard.

Select a standard or strand to see additional information.

See performance on a standard or strand over multiple assessments and compare to school and district.

The screenshot displays the Benchmark Universe interface for a teacher named Tina Smith. The main content area shows a table of standards performance for English Language Arts in Grade 1. The table is organized by achievement level and includes columns for Language, Reading: Foundational Skills, Reading: Informational Text, Reading: Literature, Speaking, and Writing. A performance chart on the right shows the test score percentage over time, comparing the class performance to school and district averages.

Achievement Level	Language	Reading: Foundational Skills	Reading: Informational Text	Reading: Literature	Speaking	Writing
≥ 80%	Avg. 75%	Avg. 87%	Avg. 57%	Avg. 67%	Avg. 87%	Avg. 27%
60-79%	L.1.1b		RI.1.2	RL.1.7		W.1.1 W.1.2 W.1.6
40-59%	L.1.6 L.1.1e L.1.2e	RF.1.4c	RI.1.5 RI.1.6 RI.1.7	RL.1.1 RL.1.3 RL.1.9		W.1.5 W.1.3 W.1.7
< 40%	L.1.1a L.1.2a L.1.1c	RF.1.1 RF.1.1a RF.1.2	RI.1.8 RI.1.9 RI.1.10 RI.1.3 RI.1.4	RL.1.2 RL.1.4 RL.1.6	SL.1.2 SL.1.3 SL.1.4	

The performance chart shows the following test scores over time:

Test Name	Test Score (%)
Interim 1x	61
Unit 1 Week 1	59
Unit 1 Week 2	61
Unit 2 Week 1	54
Unit 2 Week 2	59
Unit 2	50
Unit 3 Week 1	57
Unit 3 Week 2	57
Unit 3	56
Unit 3	56

# Class Grouping Report

Use standards-based data to inform grouping decisions. Groups can be saved to the platform in order to create quick customized assignments.

## Great for:

- ✓ Creating small groups informed by data
- ✓ Identifying students with similar skills
- ✓ Identifying high-low student pairing

This report can use specific standards or strands to group, or all ELA standards.

Group students by common strengths or by high-low performance on standards.

Specify and adjust the number of groups the report creates.

Make additional adjustment to the groups as needed.

© Benchmark Education Company, LLC. All rights reserved. Privacy Policy

# Class Single-Test Analysis by Standard

View class performance on a single assessment by ELA standard and how it compares with the rest of the school or district.

## Great for:

- ✓ Identifying opportunities for feedback
- ✓ Identifying reteaching opportunities
- ✓ Identifying opportunity gaps

See a list of standards assessed on a single assessment.

See number of questions assessed per standard. Clicking on the question number allows you to view the question.

Scores can be presented as percentages or raw score.

View	Question	Class (25/28)	School (5/7)	District (3/5)
Test Average Score:				
English Language Arts				
L.1.4a	8, 10	90%	90%	90%
L.1.5	7, 9	50%	50%	50%
L.1.6	8, 10	45%	90%	90%
RF.1.3	12	45%	45%	45%
Depth of Knowledge				
DOK 1	1, 2, 3, 4, 6, 7, 8, 9, 10, 11, 12, 13, 14, 15	67%	67%	67%
DOK 2	1, 3, 4, 5	90%	90%	90%
Skills				

# Class Single-Test Analysis by Question

View class performance on a single assessment by question and how it compares with the rest of the school or district.

Great for:

- ✓ Identifying questions to revisit
- ✓ Detailed question analysis

Class: English Language Arts 146 Teacher: Tina Smith Grade: 1 School: Alvina Elementary Test: Unit 4 Week 2 Assessment Dates: 9/10/19 - 9/17/19

Standards Performance Test Scores Single Test Analysis

Filters: Question English Language Arts Depth of Knowledge Raw Score

Compare: School District

Question	CCSS English Language Arts	Depth of Knowledge	Class (25/28)	School (5/7)	District (3/5)
1	L.1.1b	DOK 2	1/1	1/1	1/1
2	L.1.2a, 1. RF.1.4c	DOK 1	1/1	1/1	1/1
3	L.1.1b	DOK 2	0/1	0/1	0/1
4	L.1.2b	DOK 2	1/1	1/1	1/1
5	L.1.2a, 1. RF.1.4c	DOK 2	1/2	1/2	1/2
6	L.1.2b	DOK 2	2/2	2/2	2/2
7	L.1.2a, RF.1.4c	DOK 2	1/2	1/2	1/2

© Benchmark Education Company LLC All rights reserved. Privacy Policy

See standards and DOK levels aligned to each assessment item.

Identify questions that may need to be revisited as a class.

# Class Standards Comparison

Provides a detailed view of ELA standards performance by student. This report can be run on all standards or a subset of standards. It can also combine data from multiple assessments.

## Great for:

- ✓ Looking at students' performance across individual standards
- ✓ Creating class reports for administrators
- ✓ Tracking standard performance against school and district averages

ELA standards and strands are shown across the top.

Averages for class, school, and district are shown for comparison (if desired).

Student performance results are shown by standard.

Customize this report to show all standards, specific strands, or specific standards. Print report for meetings with school and district administrators.

Compare:	<input checked="" type="checkbox"/> School	<input checked="" type="checkbox"/> District	Edit Standards									
Reading Literature	RL.1.1	RL.1.2	RL.1.3	RL.1.4	RL.1.5	RL.1.6	RL.1.7	RL.1.8	RL.1.9			
District Average	70%	39%	19%	49%	40%	40%	50%	40%	50%			
School Average	70%	39%	19%	49%	40%	40%	50%	40%	50%			
Class Average	70%	39%	19%	49%	40%	40%	50%	40%	50%			
Students (28/30)	Average % Score (based on selected standards)											
Thomas Avenell	91	83	71	83	83	71	83	83	71	83		
Hallie Barns	91	83	71	71	83	83	83	83	83	83		
Oliver Hewett	65	71	71	48	83	71	71	71	71	71		
Hayden Lopez	65	71	48	71	71	83	71	83	83	83		
Ava Minnelli	53	48	48	83	48	71	48	71	71	71		
Yasi Reyes	53	48	48	71	48	71	48	71	71	71		
Edith Santos	53	48	48	27	71	71	83	71	71	71		
Jimmy Johnson	32	27	48	27	71	27	27	27	27	27		
Darius Vincent	53	48	48	83	48	71	48	71	71	71		
Jack Dawson	53	48	48	71	48	71	48	71	71	71		

# Class Test Score Overview

Provides a quick overview of assessment performance for the class over time.

## Great for:

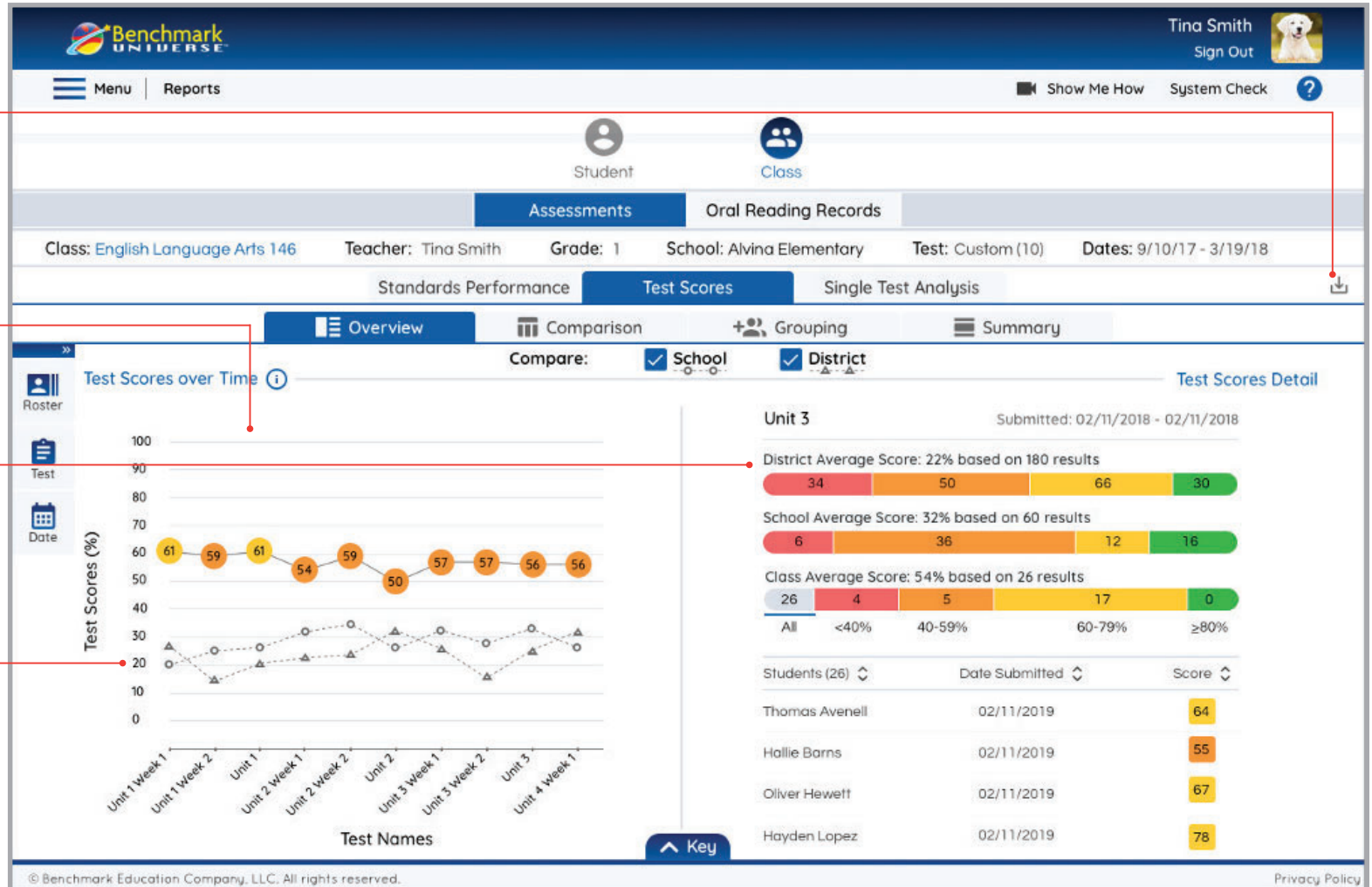
- ✓ Tracking performance over time
- ✓ Seeing class results in comparison to school and district
- ✓ Exporting results

Export results into data files for importing into other databases.

Assessment results for the class are plotted on a graph in chronological order.

See how results break out among achievement bands.

If desired, add results for the rest of the school and district to the graph.



# Class Test Score Comparison

Provides a quick overview of assessment performance for the class over time that allows you to see results for each student in the class.

## Great for:

- ✓ Tracking performance over time
- ✓ Viewing student assessment results
- ✓ Seeing class results in comparison to school and district

**Assessment results are presented for multiple assessments.**

**Students results for the entire class are shown on one screen.**

**In addition to showing results per each assessment, results for each student are also averaged.**

Tests	Interim 1	Unit 1 Week 1	Unit 1 Week 2	Unit 1	Unit 2 Week 1	Unit 1 Week 2	Unit 2	Unit 3 Week 1	Unit 3 Week 2	Unit 3
District Average	70%	39%	19%	49%	40%	40%	50%	40%	40%	50%
School Average	70%	39%	19%	49%	40%	40%	50%	40%	40%	50%
Class Average	70%	39%	19%	49%	40%	40%	50%	40%	40%	50%
Students (28/30)	Average % Score (based on selected standards)									
Thomas Avenell	91	83	71	83	83	71	83	83	71	83
Halle Barns	91	83	71	71	83	83	83	83	83	83
Oliver Hewett	65	71	71	48	83	71	71	71	71	71
Hayden Lopez	65	71	48	71	71	83	71	83	83	71
Ava Minnelli	53	48	48	83	48	71	48	71	71	48
Yasi Reyes	53	48	48	71	48	71	48	71	71	48
Edith Santos	53	48	48	27	71	71	83	71	71	83
Jimmy Johnson	32	27	48	27	71	27	27	27	27	27
Darius Vincent	53	48	48	83	48	71	48	71	71	48
Jack Wilson	53	48	48	71	48	71	48	71	71	48

# Class DOK Performance by Standard Strand

Quickly see how the class is performing according to Webb's Depth of Knowledge (DOK) levels. This report also shows the DOK in relationship to the ELA Standard Strand.

## Great for:

- ✓ Identifying class performance based on the rigor of the question items (DOK)
- ✓ Informing instructional next steps

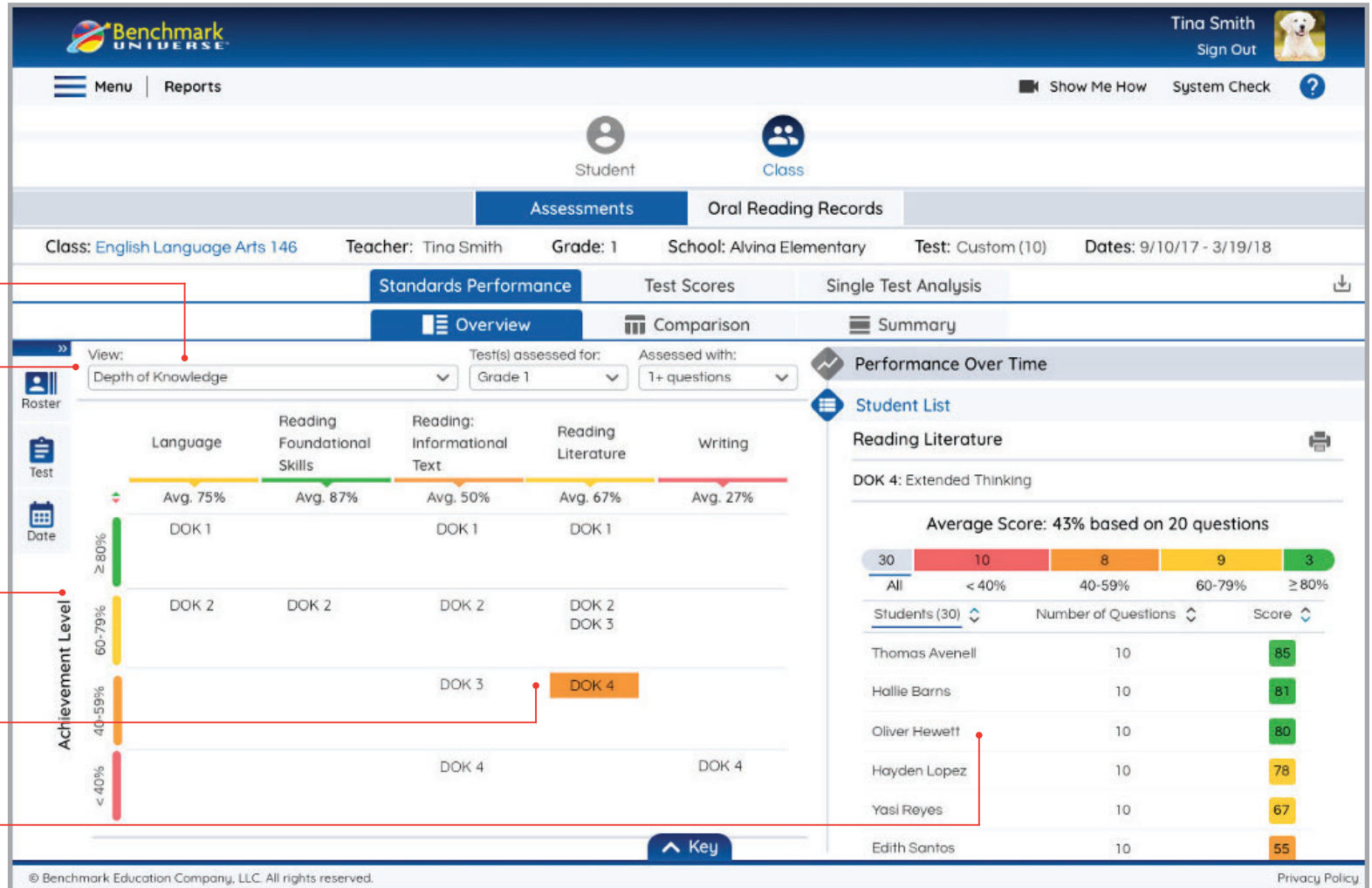
Reports on Webb's Depth of Knowledge (DOK).

DOK's are organized by ELA Standard Strands.

See achievement level by DOK level.

Select a DOK level to see additional information.

See individual student performance on each DOK level per strand.





# Student Standards Performance Over Time

Quickly identify strengths and opportunity gaps for a student based on ELA standards. Clicking on a standard or standard strand will allow you to see the student's performance on the standard or strand over time.

## Great for:

- ✓ Identifying opportunity gaps
- ✓ Informing instructional next steps
- ✓ Tracking standards performance over time

Student report on the ELA Standards.

Grouped by strands with percentages shown for each.

See standards grouped by achievement level.

Select a standard or strand to see additional information.

See student's performance on selected standard or strand over multiple assessments.

**Student:** Thomas Avenell **Class:** English Language Arts 146 **Teacher:** Tina Smith **Tests:** Custom (10) **Dates:** 9/10/17 - 3/19/18

**Standards Performance** | Test Scores | Single Test Analysis

**Overview** | Comparison | Summary

View: English Language Arts | Test(s) assessed for: Grade 1 | Assessed with: 1+ questions

	Language	Reading: Foundational Skills	Reading: Informational Text	Reading: Literature	Speaking	Writing
<b>Avg.</b>	75%	87%	57%	67%	87%	27%
<b>80%</b>	L.1.1b		RI.1.2	RL.1.7		W.1.1 W.1.2 W.1.6
<b>60-79%</b>	L.1.6 L.1.1e L.1.2e	RF.1.4c	RI.1.5 RI.1.6 RI.1.7			W.1.5
<b>40-59%</b>	L.1.1 L.1.1 L.1.1j L.1.5	RF.1.4b RF.1.3b RF.1.3c	RI.1.8 RI.1.9 RI.1.10 RI.1.3 RI.1.4	RL.1.1 RL.1.3 RL.1.9		W.1.3 W.1.7
<b>&lt; 40%</b>	L.1.1a L.1.2a L.1.1c	RF.1.1 RF.1.1a RF.1.2		RL.1.2 RL.1.4 RL.1.6	SL.1.2 SL.1.3 SL.1.4	

**Performance Over Time**

**Reading Literature**

RL.1.3: Describe characters in a story (e.g., their traits, motivations or feelings) and explain how their actions contribute to...

Average Score: 56% based on 20 question

Compare:  Class  School  District

Assessment	Score (%)
Interim 1	61
Unit 1 Week 1	59
Unit 1 Week 2	61
Unit 2 Week 1	54
Unit 2 Week 2	59
Unit 3 Week 1	50
Unit 3 Week 2	57
Unit 3 Week 3	57
Unit 3 Week 4	56
Unit 3 Week 5	56

© Benchmark Education Company, LLC. All rights reserved. Privacy Policy

# Student Standards Performance Comparison

Provides a detailed view of ELA standards performance for individual students. This report can be run on all standards or a subset of standards. It can also combine data from multiple assessments.

## Great for:

- ✓ Looking at students' performance across individual standards
- ✓ Creating student reports for parents and guardians
- ✓ Tracking standard performance against class, school, and district averages

The screenshot displays the Benchmark Universe interface for a student standards performance comparison report. The report is for student Thomas Avenell, in the English Language Arts 146 class, taught by Tina Smith, for a Custom (6) test from 9/10/17 to 3/19/18. The report is viewed in the 'Comparison' tab, showing scores for Reading Literature standards (RL.1.1 to RL.1.9) compared against Class, School, and District averages.

**Standards and strands are shown across the top.**

**Averages for class, school, and district are shown for comparison (if desired).**

**Student performance results are shown by standard.**

**Customize this report to show all standards, specific strands, or specific standards. Print report for meetings with parents/guardians.**

Reading Literature	RL.1.1	RL.1.2	RL.1.3	RL.1.4	RL.1.5	RL.1.6	RL.1.7	RL.1.8	RL.1.9
District Average	70%	39%	19%	49%	40%	40%	50%	40%	40%
School Average	70%	39%	19%	49%	40%	40%	50%	40%	40%
Class Average	70%	39%	19%	49%	40%	40%	50%	40%	40%
Student	Average % Score (based on selected standards)								
Thomas Avenell	81	83	71	83	83	71	83	83	71

# Student Test Scores Comparison

Provides a snapshot of student performance across multiple assessments and allows you to compare the results with the rest of the class, school, and district.

## Great for:

- ✓ Reporting student assessment scores
- ✓ Creating parent and guardian reports
- ✓ Seeing results from multiple assessments on one screen

**Assessment results are presented for multiple assessments.**

**Averages for class, school, and district are shown for comparison (if desired).**

**Report provides individual assessment scores as well as an average score.**

**Print report for meetings with parents/guardians.**

Tests	Interim 1	Unit 1 Week 1	Unit 1 Week 2	Unit 1	Unit 2 Week 1	Unit 1 Week 2	Unit 2	Unit 3 Week 1	Unit 3 Week 2	Unit 3
District Average	70%	39%	19%	49%	40%	40%	50%	40%	40%	50%
School Average	70%	39%	19%	49%	40%	40%	50%	40%	40%	50%
Class Average	70%	39%	19%	49%	40%	40%	50%	40%	40%	50%
Student	Average % Score (based on selected standards)									
Thomas Avenell	48	61	59	61	54	59	50	57	56	56

# Student Test Scores Overview

Shows a graphical representation of student assessment performance over time. Toggle class, school, and district results to plot them on the same graph.

## Great for:

- ✓ Reporting student assessment scores graphically
- ✓ Comparing results to class, school, and district





# Benchmark

WORKSHOP™

For technical support, call our Tech Support Hotline at 1-855-245-9751  
or e-mail us at [techsupport@benchmarkeducation.com](mailto:techsupport@benchmarkeducation.com).

